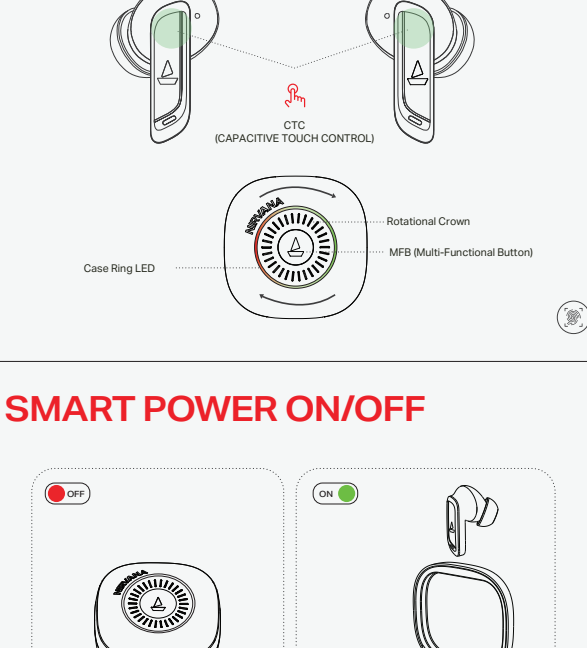
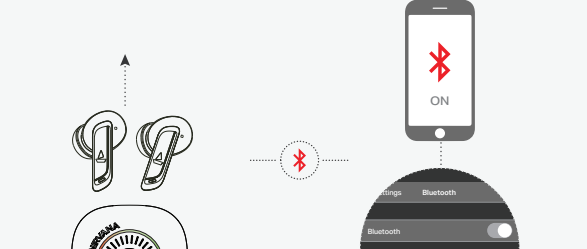


# NIRVANA CROWN SMART GUIDE

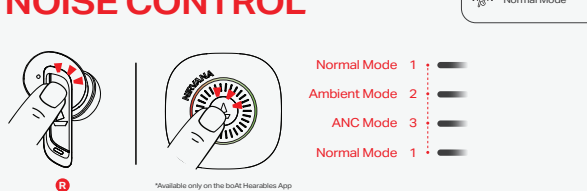
## PACKAGE CONTENTS



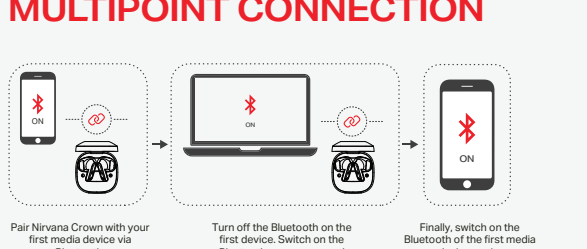
## PRODUCT LABELLING



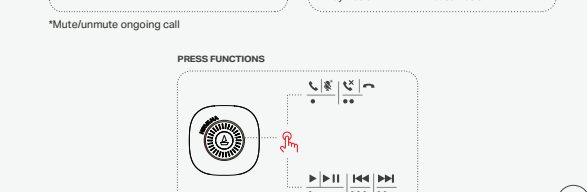
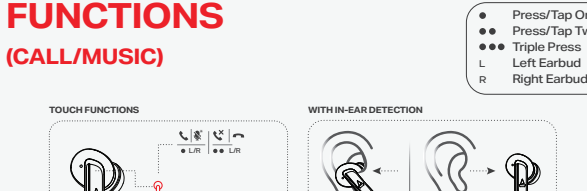
## SMART POWER ON/OFF



## BLUETOOTH PAIRING



## MODES OF NOISE CONTROL

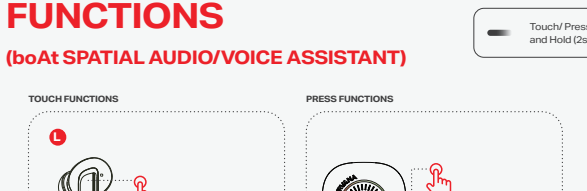


Long touch the CTC on the right earbud for 2 seconds to toggle between Normal (ANC Off), Ambient, and ANC (Active Noise Cancellation) audio modes.

OR  
Long press the case button for 2 seconds to toggle between Normal (ANC Off), Ambient, and ANC (Active Noise Cancellation) audio modes, indicated with vibration and LED on the case.

Note: 1. You can customize the case button function to switch between the different noise cancellation modes using the boAt Hearables app.  
2. By default, the Normal (ANC Off) mode is active.  
3. The operational cycle is Normal Mode (ANC Off) → Ambient Mode → ANC Mode.  
4. Your earbuds will remember the mode you last used & will enable the respective noise cancellation mode when they are powered on next time.  
5. When you activate ANC or Ambient modes, the earbuds will consume more power which will reduce the playtime.

## MULTIPOINT CONNECTION



Pair Nirvana Crown with your first media device via Bluetooth.

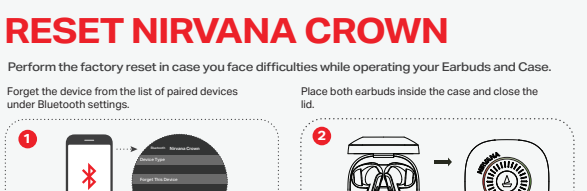
Turn off the Bluetooth on the first device. Switch on the Bluetooth on your second media device to pair with Nirvana Crown.

Finally, switch on the Bluetooth of the first media device again.

Congratulations! Your Nirvana Crown is now connected to both devices successfully.

Note: If the earbuds are not connected, try connecting the first device manually once again to activate multipoint connection.

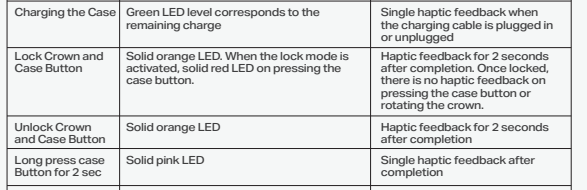
## FUNCTIONS (CALL/MUSIC)



\*Mute/unmute ongoing call

\*Mute/unmute ongoing call

## FUNCTIONS (VOLUME/CASE LOCK-UNLOCK)



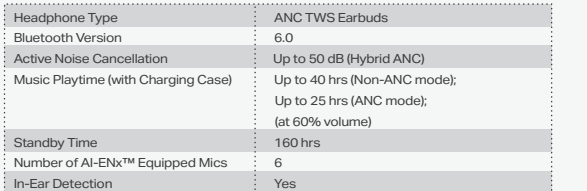
• **Volume Up:** Rotate the crown in the clockwise direction to increase the volume.

• **Volume Down:** Rotate the crown in the anti-clockwise direction to decrease the volume.

• **Lock/Unlock Case:** Press the case button 3 times and then hold it for 2 seconds to lock the crown and case button. [Haptic Feedback with LED on Case]

Note: The earbuds may start at high volume when first switched on. You can adjust the volume to your preferred level using the crown on the case or the volume controls on the media device.

## FUNCTIONS (boAt SPATIAL AUDIO/VOICE ASSISTANT)



• **boAt Spatial Audio:** Long touch the CTC on the left earbud for 2 seconds to activate boAt Spatial Audio. Long touch the left earbud CTC again for 2 seconds to switch to boAt Signature Sound.

• **Voice Assistant:** Press and hold the case button for 2 seconds to activate the default smart voice assistant (Google Voice Assistant/Siri). [Haptic Feedback with Pink LED on Case]

Note: boAt Signature Sound remains activated by default when you use these earbuds for the first time.

• boAt Spatial Audio Mode is experienced best when both earbuds are worn.

• Streaming in boAt Spatial Audio mode will reduce the playtime of the earbuds.

## boAt HEARABLES APP COMPATIBILITY

Discover the following features of your Nirvana Crown only on the Hearables App-

- Toggle ANC Modes
- Switch between 3 Vibration Intensity Modes
- Case Ring LED Color Customization
- Activate/Deactivate boAt Spatial Audio
- Lock/Unlock Case Button & Crown
- Earbud and Case Controls Customization
- Preset EQ Modes
- Ring My Buds
- Connectivity and Battery Status
- Activate/Deactivate Multipoint Connectivity
- Activate/Deactivate In-Ear Detection
- Smart Diagnostics Function
- Over-the-Air Software Updates

## RESET NIRVANA CROWN

Perform the factory reset in case you face difficulties while operating your Earbuds and Case.

Forget the device from the list of paired devices under Bluetooth settings.

Place both earbuds inside the case and close the lid.

Press and hold case button for 10 seconds. After successful reset, the charging case vibrates continuously for 3 seconds with the ring LED lighting up progressively in a circular pattern followed by 3 yellow flashes.

Wait for 5 seconds. Open case lid & perform a fresh connection.

Congratulations! Your Nirvana Crown has been reset.

## LED PATTERN & HAPTIC RESPONSE GUIDE

Function	Case Ring LED - Default Color & Pattern	Haptics (Vibration)
Volume Up	Cyan LED level increases	Low-high vibration
Volume Down	Cyan LED level decreases	High-low vibration
Crown Single Press	Dark blue LED	Single haptic feedback per press
Incoming Call	Breathing green LED	No haptic feedback
Charging the Case	Green LED level corresponds to the remaining charge	Single haptic feedback when the charging cable is plugged in or unplugged
Lock Crown and Case Button	Solid orange LED. When the lock mode is activated, solid red LED on pressing the case button.	Haptic feedback for 2 seconds after completion. Once locked, there is no haptic feedback on pressing the case button or rotating the crown.
Unlock Crown and Case Button	Solid orange LED	Haptic feedback for 2 seconds after completion
Long press case Button for 2 sec	Solid pink LED	Single haptic feedback after completion
Software Update	Breathing orange LED	Haptic feedback after completion

## CHARGING STATUS GUIDE



LOW BATTERY (<20%): BREATHING RED LED WITH HAPTIC FEEDBACK ON OPENING THE CASE LID.

CHARGING: GREEN LED FLASHES SLOWLY

FULLY CHARGED (100%): SOLID GREEN LED

LOW BATTERY (<30%): 2 WHITE LED FLASHES

CHARGE (30%-100%): 3 WHITE LED FLASHES

## SPECIFICATIONS

Headphone Type	ANC TWS Earbuds
Bluetooth Version	6.0
Active Noise Cancellation	Up to 50 dB (Hybrid ANC)
Music Playtime (with Charging Case)	Up to 40 hrs (Non-ANC mode); Up to 25 hrs (ANC mode); (at 60% volume)
Standby Time	160 hrs
Number of AI-ENx™ Equipped Mics	6
In-Ear Detection	Yes
IWP™ Tech	Yes
BEAST™ Mode	Yes; 50 ms Low Latency
Transmission Range	10 m
Driver Size	10 mm*2
Supported Codecs	AAC/SBC
Frequency	20 Hz-20 kHz
Battery	470 mAh (Case); 40 mAh*2 (Earbuds)
ASAP™ Charge	Yes; 10 mins charge = 180 mins playtime
Charging Time	90 mins (Case); 30 mins (Earbuds)
Charging Interface	USB Type-C
Water Resistance	IPX4

## CHARGING GUIDELINES

Charging norms & Precautionary Guidelines: -

- Charger/Brick/Adapter : 5V/1A
- Cable/Wire : Standard Cable (10 strands @0.1 mm diameter/strand)

Any other accessory can be used to charge the product as long as the above-mentioned norms are followed.

Note: (1) Before using the earbuds for the first time, it is recommended to fully charge them.

(2) Please note that the earbuds cannot be used / switched on while charging.

(3) This device and any electrical accessories are compliant with local applicable rules on the restriction of the use of certain hazardous substances in electrical and electronic equipment.

## LEARN MORE ABOUT YOUR PRODUCT



Scan this QR Code to Access Your Product's Manual, FAQs, and Warranty Information